

SMB WLAN Controller +Gateway

WHG-100



Gigabit Multi WAN Ports



Automatic Discovery



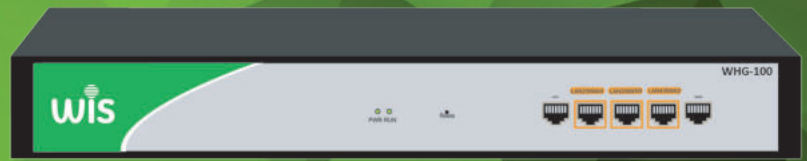
AP Support Upto 100



User Support Upto 120



Supporting MAC Authentication



OVERVIEW

WHG-100 is a size Enterprise Gateway based on CAPWAP protocol. Support Load Balance, Ethernet backup and Ethernet Superimposed, multi-ISP access; then support DHCP, policy routing and VPN, together with Smart flow control, Abundant security, varied user management and multiple authentication function, it consistent to provide high efficiency and professional network connectivity for hotel, enterprise, Internet bar, shopping mall. What's more, it can manage the wireless access point fast and stable in central and remote, provide whole wireless coverage solution, cost saved and convenient.

FEATURES

- Multiple Gigabit WAN support PPPoE/DHCP/Static IP access.
- 5*10/100/1000Mbps Giga ethernet RJ45 Ports
4 Gigabit LAN /WAN Ports,1 Gigabit WAN Port.
- Up to 100pcs wireless AP.
- Support Line backup/Multi-broadband overlay / Multi ISP access/Behavior management/intelligent QoS policy.
- Abundant security mechanism.
- Multiple Authentication.
- Web/CLI/Telnet management Remote management.
- TCP/UDP/ICMP flood defense Block TCP scanning.

Multiple Gigabit WAN and multiple routing functions

WHG-100 support PPPoE/DHCP/Static IP access, work with different ISP and max 120 end users can access into it.Support multiple Gigabit WAN ports, support load balance, Ethernet Superimposed and multiple ISP network access to avoid bandwidth overload, then support Ethernet backup to recover the dropped networking line, ensure the whole networking smoothly; It support policy-based routing function also, administrator will set the network based on IP/MAC/Domain/Interface policies.

Smart QoS

WHG-100 with powerful QoS functions:

One-click to enable/disable the smart QoS, which can recognize the traffic size and traffic characteristics, algorithm the fairness and control network latency to improve the downloading, video, games and web pages network experience.

Multiline shunt policy like maximum allow 180 Ethernet lines to access and shunt, IP shunting and session shunting, process diversion and other shunting rules like time, port, routing table, application and shunting weight, to meet with different application request.

Application Priority Automatically: auto to give priority to games, web applications under bandwidth constraints conditions.

Support Policy Bandwidth control and TCP, UDP connection quantity according to IP address, individual users, user department and online time conditions to limited the maximum flow on each line, ensuring different service for different users and applications.

Abundant security mechanism

WHG-100 support a variety of security mechanism, like TCP/UDP/ICMP Flooding, IP/MAC/URL/Web -filtering functions, Ping of Death and other related threats, extend protection to every port of the router and enable the ports to provide DoS/DDoS attack protection, traffic monitoring, Uniform Resource Locator (URL) filtering, and application layer filtering.

Multiple authentication

WHG-100 support portal authentication, PPPoE authentication, IP and MAC authentication. It support Wechat authentication, one-time password authentication, display or promote advertisement to user and bring extra value for merchant; Then support SMS authentication when access into cloud server and work with SMS gateway. It can comply with third party Radius server for billing function. What's more, it work as PPPoE server, can create PPPoE account, password, bandwidth and valid time, to realize PPPoE billing function



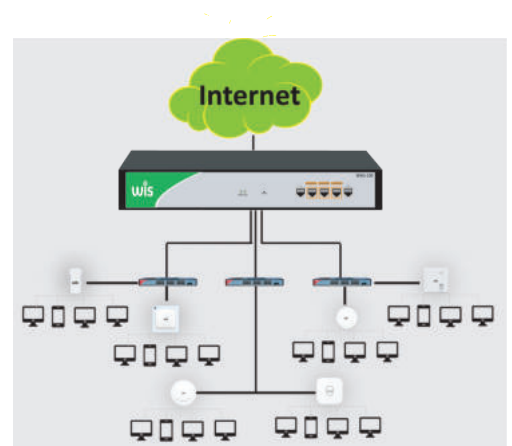
Remote Maintenance, Auto firmware upgrade

Administrator can access into WHG-100 management interface page remotely at home, to manage and maintenance the wireless access point, keep the whole network stable in economic way. WHG-100 can automatically to upgrade the new released firmware, zero steps to recovery the system problem.

AC management for wireless AP

Assign IP address for Wireless AP: Build in DHCP Server, it can assign the IP address for wireless AP automatically when AP online; AP's IP address can be same/different as user's IP address based on request.

Template Configure: Administrator can set different template for different model, like SSID, password, mode, channel, RF power, coverage threshold and tag VLAN; Then can select wireless AP or upgrade AP firmware by models, different color show on/off status, very clear Channel Analysis: support Wi-Fi channel analysis, select the channel with less wireless AP to avoid latency and package loss, keep best wireless coverage performance.

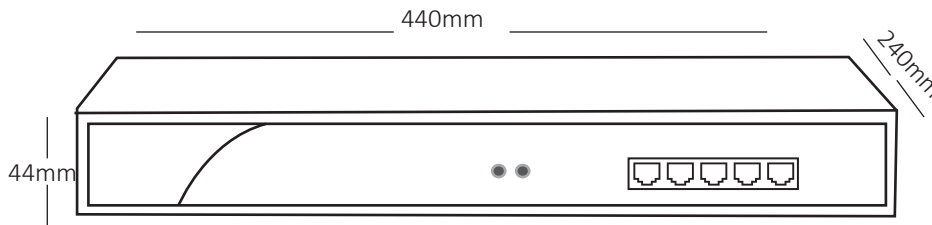


SPECIFICATION

| | |
|--------------------------|---|
| WHG-100 | |
| Protocol | IEEE 802.3, 802.3u, 802.3ab TCP/IP, DHCP, ICMP, NAT, PPPoE, SNTP, HTTP, DDNS, IPsec, PPTP, L2TP, CAPWAP Protocol |
| CPU | MT7621 |
| DDR | 256M |
| Flash | 16M |
| Heat Dissipate | Super silent ball fan |
| Ports | 4 × 10/100/1000Mbps LAN ports (can set to WAN port) 1 × 10/100/1000Mbps WAN port |
| Power | AC:100-240V,50HZ |
| Dimension | 440mm*240mm*44mm |
| Working Temperature | -20°C~55°C |
| Storage Temperature | -40°C ~ 70°C |
| Working Humidity | 5% ~ 97%RH (No condensation) |
| Firmware features | |
| AP Management | Max to access and manage 120 users Max to manage 100PCS wireless AP Centrally and remotely to manage/configure wireless AP View user's status |
| Smart Flow Control | One click smart flow control Powerful multiline diversion Application Priority Automatically |
| Load Balance | Multiple WAN, multiple ISP network access Intelligence load balance Ethernet line backup Ethernet Superimposed Policy routing: based on IP address, destination IP address, source MAC address, network port, domain, destination port, Extranet port, Identity binding Protocol binding |
| Routing | Static Routing |
| Behavior Management | All-round to block P2P firmware P2P flow control and bandwidth allot File and URL filter Monitor network behavior at all times |
| Bandwidth limitation | IP-based bandwidth limitation Safeguard / Restrict bandwidth Time strategy IP based session restriction |
| VPN | L2TP, PPTP, VTUNS |
| Security Center | MAC address filter UPR/key words filter Web content filter IP address filter Port mapping DMZ |
| Defense Center | TCP/UDP/ICMP flood defense Block TCP scanning Block ping WAN port |
| ARP Detection | Send GARP packets ARP Scanning on WAN/LAN port Online detection IP-MAC binding |

| | |
|------------------|--|
| Authentication | PPPoE authentication Portal authentication like Wechat Authentication, WEB password authentication, One-time password authentication, SMS authentication |
| | IP and MAC authentication: Allow/deny user access by IP/MAC address |
| Management | Web/CLI/Telnet management Remote management |
| Others | DDNS, VPN management |
| Package Contents | WHG-100*1 Power Cable*1 Quick Installation Guide Mounting Material |

DIMENSIONS



ORDERING INFORMATION

WHG-100

Enterprise Gateway & WLAN Controller



*Product specifications and availability are subject to change without notice

