

Enterprise Gateway & WLAN Controller

WHG-500



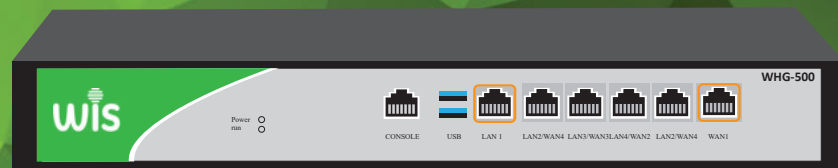
Gigabit Multi WAN Ports

Automatic Discovery

AP Support Upto 500

User Support Upto 500

Supporting MAC Authentication



OVERVIEW

WHG-500 is a middle size Enterprise Gateway based on CAPWAP protocol. Support Load Balance, Ethernet backup and Ethernet Superimposed, multi-ISP access; then support DHCP, policy routing and VPN, together with Smart flow control, Abundant security, varied user management and multiple authentication function, it consistently provides high efficiency and professional network connectivity for hotels, enterprises, Internet bars, shopping malls. What's more, it can manage the wireless access point fast and stable in central and remote, provide a whole wireless coverage solution, cost saved and convenient.

FEATURES

- Multiple Gigabit WAN support PPPoE/DHCP/Static IP access.
- 5*10/100/1000Mbps Giga ethernet RJ45 Ports
- 4 Gigabit LAN /WAN Ports, 1 Gigabit WAN Port.
- Up to 500pcs wireless AP, allow 500 users access,
- support Line backup/Multi-broadband overlay / Multi-ISP access/Behavior management/intelligent QoS policy.
- Abundant security mechanism.
- Multiple Authentication.
- Web/CLI/Telnet management Remote management.
- TCP/UDP/ICMP flood defense Block TCP scanning

Multiple Gigabit WAN and multiple routing functions

WHG-500 supports PPPoE/DHCP/Static IP access, works with different ISPs and max 500 end users can access into it. Support multiple Gigabit WAN ports, support load balance, Ethernet Superimposed and multiple ISP network access to avoid bandwidth overload, then support Ethernet backup to recover the dropped networking line, ensure the whole networking smoothly; It supports policy-based routing function also, administrator will set the network based on IP/MAC/Domain/Interface policies.

Smart QoS

WHG-500 with powerful QoS functions:
One-click to enable/disable the smart QoS, which can recognize the traffic size and traffic characteristics, algorithm the fairness and control network latency to improve the downloading, video, games and web pages network experience.

Multiline shunt policy like maximum allow 180 Ethernet lines to access and shunt, IP shunting and session shunting, process diversion and other shunting rules like time, port, routing table, application and shunting weight, to meet with different application request.

Application Priority Automatically: auto to give priority to games, web applications under bandwidth constraints conditions.

Support Policy Bandwidth control and TCP, UDP connection quantity according to IP address, individual users, user department and online time conditions to limited the maximum flow on each line, ensuring different service for different users and applications.

Abundant security mechanism

WHG-500 support a variety of security mechanism, like TCP/UDP/ICMP Flooding, IP/MAC/URL/Web -filtering functions, Ping of Death and other related threats, extend protection to every port of the router and enable the ports to provide DoS/DDoS attack protection, traffic monitoring, Uniform Resource Locator (URL) filtering, and application layer filtering.

Multiple authentication

WHG-500 support portal authentication, PPPoE authentication, IP and MAC authentication

It support Wechat authentication, one-time password authentication, display or promote advertisement to user and bring extra value for merchant; Then support SMS authentication when access into cloud server and work with SMS gateway. It can comply with third party Radius server for billing function.

What's more, it work as PPPoE server, can create PPPoE account, password, bandwidth and valid time, to realize PPPoE billing function



Remote Maintenance, Auto firmware upgrade

Administrator can access into WHG-500 management interface page remotely at home, to manage and maintenance the wireless access point, keep the whole network stable in economic way.

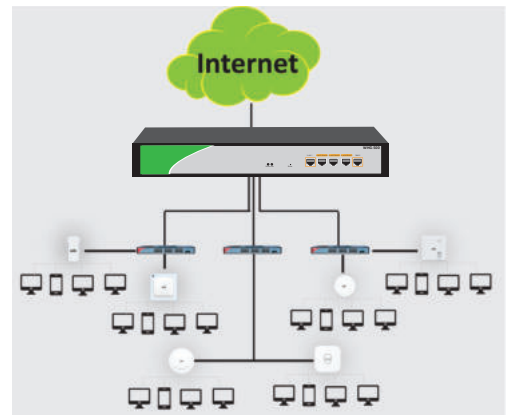
WHG-500 can automatically to upgrade the new released firmware, zero steps to recovery the system problem.

AC management for wireless AP

Assign IP address for Wireless AP: Build in DHCP Server, it can assign the IP address for wireless AP automatically when AP online; AP's IP address can be same/different as user's IP address based on request.

Template Configure: Administrator can set different template for different model, like SSID, password, mode, channel, RF power, coverage threshold and tag VLAN; Then can select wireless AP or upgrade AP firmware by models, different color show on/off status, very clear;

Channel Analysis: support Wi-Fi channel analysis, select the channel with less wireless AP to avoid latency and package loss, keep best wireless coverage performance.



WHG-500	
Storage type	General hard disk, SSD, CF Card, DOM
Hard disk	1 x SATAIII 2.5 inch hard disk, capacity optional
SSD	1 x M-SATA SSD, default: 8GB
CF card	1 x TYPEII CF card
DOM	1 x SATA DOM (share hard disk interface)
Extend Port	
PCIe	No
Mini-PCIe	No
other	
Platform	
Size	1U Frame
CPU	Intel® Baytrail J1800 2.4GHz/1MB
CPU type	Board sticking
Chipset	SOC
BIOS	SPI AMI EFI BIOS
Flash Info	
Flash	DDR3 1333/1600
Flash size	Default: 2GB, Optional: 4~8GB
Network Interface	
Interface	6 x GbE RJ45 Ports
Chipset	6 x Intel®I211AT
BYPASS	1 group is optional
Bypass Control	MCU or GPIO control
Serial Port	
Port	1 x RJ45 Serial port
Default baud rate	115200bps
Serial port definition	Compatible with Cisco definition
I/O Interface	
Reset Button	1PC, to control GPIO or BYPASS
Watchdog	Support
GPIO	6 lines
Heat Dissipate	No Fan module on mother board 1 x System Fan
Power Supply	
Power supply	Build in Open type power supply
Power Consumption	75W
Power input	AC 90V-264V @47-63Hz
Size, Environment and Certification	
Size	430 (L)×300(W)×44(H)mm
Package Size	545(L)*415(W)*180(H)mm
N.W	KG
G.W	KG
Working Temperature	0°C-50°C
Storage Temperature	-40°C~70°C
Storage Humidity	5~95% RH, Non condensing
Certification	3C, ROHS
Firmware Spec:	
AP Management	Max to access and manage 500 users
	Max to manage 500 PCS wireless AP
	Centrally and remotely to manage/configure wireless AP
	View user's status

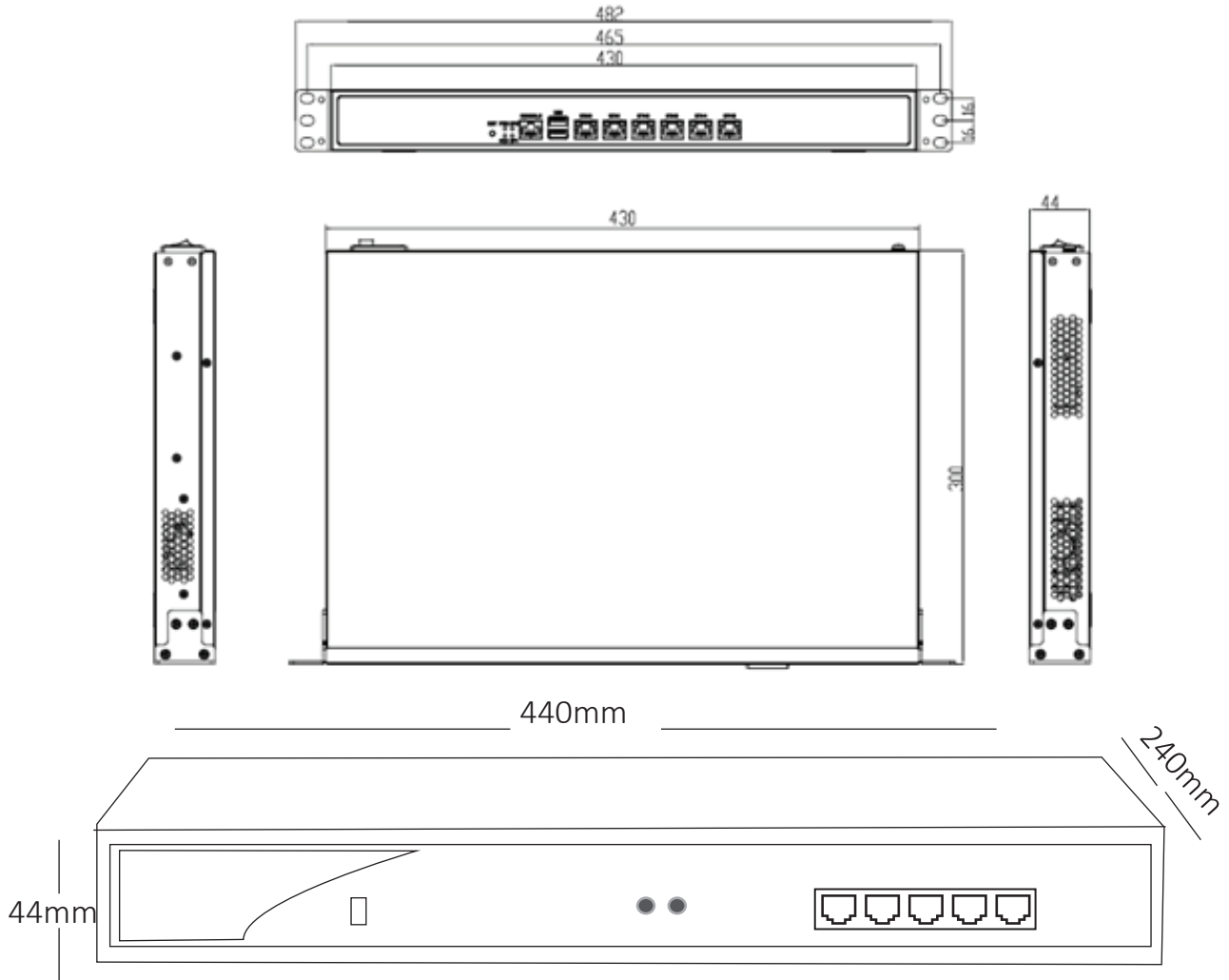
Smart Flow Control	One click smart flow control
	Powerful multiline diversion
	Application Priority Automatically
Load Balance	Multiple WAN, multiple ISP network access
	Intelligence load balance
	Ethernet line backup
	Ethernet Superimposed
	Policy routing: based on IP address, destination IP address, source MAC address, network port, domain, destination port, Extranet port, Identity binding
	Protocol binding
Routing	Static Routing
Behavior Management	All-round to block P2P firmware
	P2P flow control and bandwidth allot
	File and URL filter
	Monitor network behavior at all times
Bandwidth limitation	IP-based bandwidth limitation
	Safeguard / Restrict bandwidth
	Time strategy
	IP based session restriction
VPN	L2TP, PPTP, VTUNS
Security Center	MAC address filter
	UPR/key words filter
	Web content filter
	IP address filter
	Port mapping
	DMZ
Defense Center	TCP/UDP/ICMP flood defense
	Block TCP scanning
	Block ping WAN port
ARP Detection	Send GARP packets
	ARP Scanning on WAN/LAN port
	Online detection
	IP-MAC binding
Authentication	PPPoE authentication
	Portal authentication like Wechat Authentication, WEB password authentication, One-time password authentication, SMS authentication
	Radius authentication: work with the 3rd party radius server
Management	Web/CLI/Telnet management
	Remote management
	DDNS, VPN management
Packge Content	WHG-500
	Power Cable *1
	Installation Accessory
	QIG*1



*Product specifications and availability are subject to change without notice



DIMENSIONS



ORDERING INFORMATION

WHG-500

Enterprise Gateway & WLAN Controller



*Product specifications and availability are subject to change without notice

