

WIS

CPE900

5GHz 900Mbps Outdoor CPE with LED Display



900 Mbps



2* RJ45 ports

Button Press
bridge2.5KM
distance

5GHz

Lightning
ProtectionRemote
ManagementProtection
Level

OVERVIEW

WIS new series CPE900 is a hot sell 11AC outdoor CPE with 900Mbps data rate. Comply with IEEE 802.11b/g/n/ac standard, with 12dBi dual polarized high gain antenna, the PTP/PTMP distance is more than 2500 meters. It supports Wireless AP, Wireless Bridge operation mode for PTP/PTMP connections, save much human work and cost, make the long range wireless coverage, data transmit and wireless monitoring simple and professional.

FEATURES

- Comply with IEEE 802.11b/g/n/ac standard
- 12dBi dual polarized high gain antenna
- 2*10/100 Mbps Ethernet LAN ports.
- supports 24V passive PoE and 4KV lightning protection, ideal for outdoor use.
- IP65 water-proof, dust-proof, suit for multiple harsh environments.
- support Wireless AP, Wireless Bridge operation mode for PTP/PTMP.
- Independent hardware protection circuit design, automatically recover abnormal CPE.
- support watchdog self-detection function, reboot and recover device automatically.

Multiple Protection for Stable Performance

WIS-CPE900 with ABS waterproof, dustproof and sunscreen shell, temperature adaptive also; Meantime, it supports 24V passive PoE, ESD protection and surge protection, ideal for outdoor use.

Solution for Indoor/ Outdoor Video Data Transmission

It supports Wireless AP, Wireless Bridge operation mode for PTP/PTMP connections, with operation switch on device, easy to setup WIS-CPE900 operation mode, no need to access into GUI, avoid the complex setup program, then simple to view the connection status and signal strength by LED signal lights

5GHz High Speed with Long Outdoor PTP/PTMP Range

Comply with new and least 11 ac technology, pure 5GHz band, 900Mbps data rate, faster wireless speed with less Wi-Fi interference, signal more stable, widely be used in wireless security or long range PTP/PTMP connections.

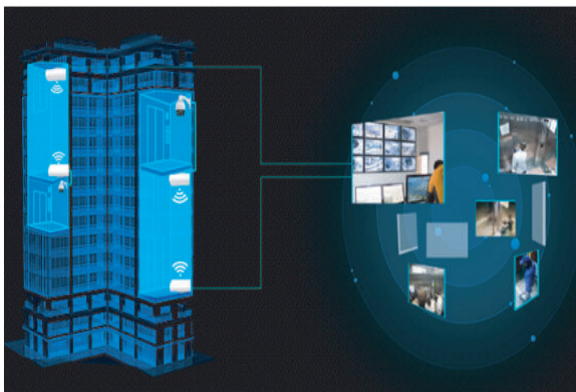
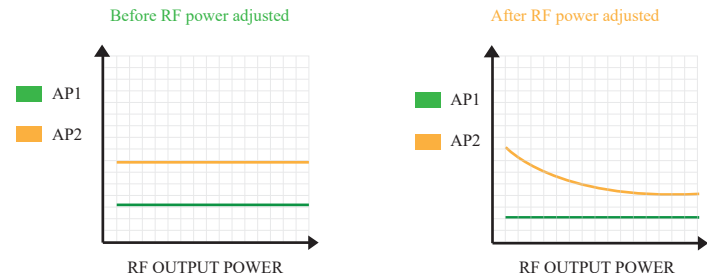


Professional outdoor shell suit for multiple harsh environment

Adopt outdoor ABS Plastic shell, simple and elegant! Support professional lightning protection, IP 65 water-proof, suit for multiple harsh environment (-40°C-70°C), also can work stable

Adjustable RF Power, Improve Wireless Quality

Adjustable RF Power, Improve Wireless Quality. The transmission RF power is adjustable based on environment, Cut down RF power in place with high density of people or wireless AP to reduce Wi-Fi interference, Increase RF power in large area to improve the signal strength.



Elevator monitoring application scenarios

5.8GHz frequency, 900Mbps high speed, effectively ensure clear and smooth monitoring picture.



Outdoor Water-Proof/ Surge protection/ Long Range Distance.

Distance up to 2500 meters. Receive distance up to 2500 meter, easy to transmit 4K video. With AP and client operation mode, easy to achieve PTP/PTMP wireless connection, meet with long range wireless transmission in buildings, factories, rural areas, squares.

Cloud remote management system

It support cloud remote management, administrator can monitor the working status, upgrade firmware, reboot, timed reboot device through cloud server, recover and maintain device at any time and any location, operator level outdoor PTP/PTMP connection equipment.



Watchdog



Self Inspection



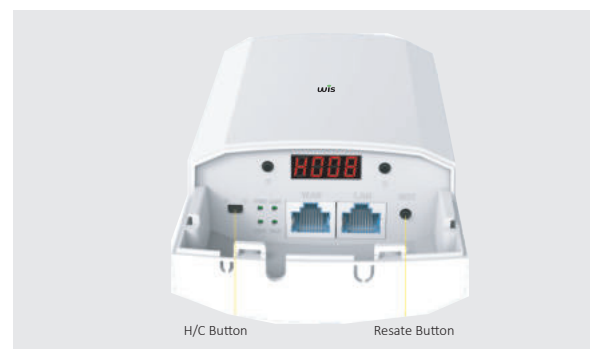
Link Detection

Watchdog design, No internet lose

Independent hardware protection circuit design, automatically recover abnormal CPE. Built in watchdog protection circuit, will automatically reboot when CPE work abnormal, ensure stable signal transmission.

LED Display and Button Press to Bridge

With visible LED display to show host/ client mode/ signal strength/ IP address, then with H/ C button, press it to change the host/ client mode for quickly point to point and point to multi-point wireless connection, simple to install and cost saving.




 PTP/PTMP
Wireless Transmission

 Elevator Monitoring
Wireless Transmission

 Enterprise
WLAN Transmission

 Long distance
Wireless Transmission

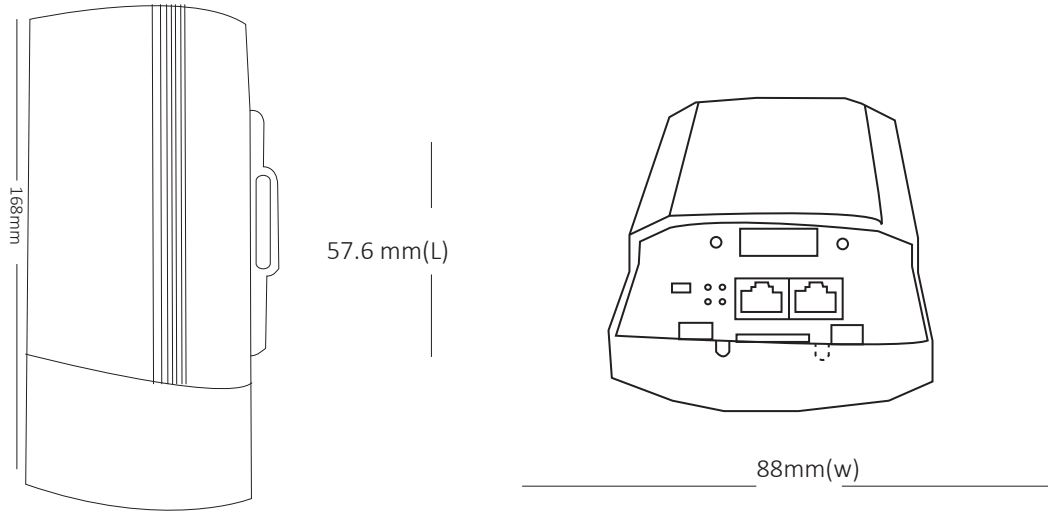
Multiple Application Scene

PTP/PTMP Wireless Transmission
Elevator Monitoring Wireless Transmission
Enterprise WLAN Transmission
Long distance Wireless Transmission

SPECIFICATION

WIS-CPE900	
Standard	802.11a/n/ac
Flash	8MB
DDR3L	64MB
2.4G Frequency	5.150GHz –5.850GHz
Interface	1 * 10/100 RJ45 LAN Port(Can be sued as WAN) 1 * 10/100 RJ45 LAN Port 1 * Reset Button 1 * S/ M Switch 2 * Function Buttons
Antenna	Built-in 12 dBi directional antenna
Data Rate	900Mbps
End Users	50+
5G RF Power	≤ 20dBm
PPM	±20ppm
PoE	24V Passive POE
LED light	Sys,2*LAN
Power Consumption	≤ 8W
ESD Protection Standard	Contact Discharge: ±6KV; Air Discharge: ±8KV
Surge Protection Standard	Common mode: ±2KV, Differential mode ±1KV
Antenna Specification	
Frequency Range	5.15-5.85GHz
Impedance	50 Ohms nominal
Gain	12dBi
Radiation	Directional
Polarization	Vertical +Horizontal
Connector	TIN
Others:	
Environment	Operating Temperature:-30~55°C Limit working temperature:-40~70°C Storage Temperature:-40~70°C Humidity: 5%~95% non-condensing
Size	168*88*57.6MM
Weight	0.5KG
Package Contents	900Mbps Wireless Outdoor CPE Mounting Material , 24V PoE Quick Installation Guide

DIMENSIONS



ORDERING INFORMATION

WIS-CPE900

900Mbps Wireless Outdoor CPE



*Product specifications and availability are subject to change without notice

www.wisnetworks.in | sales@wisnetworks.in

