

## WIS-EAP500-OUTDOOR

# 11Ac 1200Mbps Wi-Fi6 Dual Band Managed Outdoor Wireless AP

WIS-EAP500-OUTDOOR IS a 11ac Wi-Fi standard Qualcomm Chipset high power Outdoor Wireless Access Point support MU-MIMO, Wave2.0, OFDMA and Seamless Roaming. Combined 1200Mbps Wi-Fi speed over 2 radios: 2.4GHz (300Mbps 11ac 2\*2) + 5GHz (900Mbps 2\*2), equipped Gabit LAN Ports, support MU-MIMO and DL/UL-OFDMA modulation, Giga Ethernet data rate and more users, then multiple users can upload or download multiple packets at same time, narrower subcarrier spacing and longer symbol time, improved the stability and data processing efficiency, publicly to be used in high density access environment such as university campus, concert venue, hotels, corporates etc.

## Superior performance guarantee

WIS-EAP500-OUTDOOR with Qualcomm industrial chipset and adapt to intelligent channel analysis technology choose the less Wi-Fi interference channel makes wireless transmission faster and more stable.

## Multiple Protection for Stable Performance

WIS-EAP500-OUTDOOR with ABS fireproof material, white color, suitable for various decoration styles. And PCB board with watchdog design, can reboot automatically in case of failure. What's more, it support lightning protection and ESD protection, can install in various harsh environment.

## TWT (Target Wake-up Time)

802.11ac support TWT, allowing devices to negotiate when need to wake up, send and receive data. In additional, wireless AP can group the device into different TWT cycles, increase sleep time, reduce the device competing a tier wake-up, and save the device power.

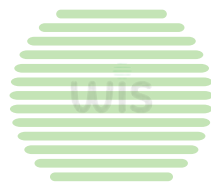
## High-Speed Dual Band Wi-Fi 6

WIS-EAP500-OUTDOOR equips with the latest wireless technology, Wi-Fi 6, for faster speeds, greater capacity, and reduced network congestion. Wi-Fi 6 (IEEE802.11ax) delivers a huge boost in speed and total capacity and takes your Wi-Fi to the next level while being backward compatible with IEEE802.11ax/ac/b/g/n/a Wi-Fi standards, optimized for Internet activities requiring high bandwidth, such as HD videos and online gaming



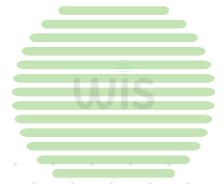
## Features

- Comply with IEEE 802.11ac/b/g/n, dual band, 1200Mbps Data Rate.
- 11ac 2x2 MU-MIMO technology, 2\* 10/100Mbps Ethernet Ports
- Support active IEEE 802.3af 48V PoE standard,
- Multi SSID up to 8, Hide SSID function
- Spectrum Navigation (5G Priority)
- Support Gateway (PPPOE, static IP, dynamic IP)
- Wireless AP, Repeater, supports FIT/FAT operation mode.
- Build in firewall, IP filter, URL filter and MAC filter.
- RF power adjustment and frequency analyzer for better application in different environment.



## SPECIFICATION

Model Number	WIS-EAP500-Outdoor
frequency band	2.4GHz & 5GHz
transmission protocol	802.11 b / g / n & 802.11 a/n/a
RF Power	(2.4GHz) <22dBm
RF Power	(5GHz) <21dBm
External dual-band antenna	2 2.4GHz /5GHz omnidirectional dual-band antennas, each gain: 5dBi
Maximum rate	2.4G provides a maximum access rate of 300 Mbps, and 5G provides a maximum access rate of 866 Mbps
2.4G EVM	802.11b: ≤-10dB ; 802.11g: ≤-25dB ; 802.11n: ≤- 28dB
5G EVM	802.11a: ≤-25dB ; 802.11n: ≤-28dB ; 802.11ac: ≤- 32dB
Frequency deviation (ppm)	±20ppm
Interface (WAN)	1 10/100M adaptive WAN port, support 24 V POE
Interface (LAN)	1 10/100M adaptive LAN port
button	reset button ( press and hold for 6-10 seconds to restore the factory default configuration)
Status Indicator	WAN port light, LAN port light, 2.4G light, 5.8G light
powered by	24V Passive PoE , 12V / 1A DC
Maximum power consumption	< 7W _
Product size	196 mm* 86 mm* 40 mm
weight	0. 4 kg
working environment	Normal working temperature:- 30 °C to 55°C; storage temperature:-40°C to 70°C; humidity: 5% to 95% (non-condensing)
degree of protection	IP65
ESD	Air discharge +/-8 Kv, contact discharge +/-6Kv
surge	Common mode 4Kv, differential mode 2Kv
wireless function	SSID broadcast SSID quantity: 4 (2.4GHz) + 4 (5GHz), support Chinese SSID Hide SSID function Wireless encryption: OPEN , WPA/WPA2PSK-TKIPAES, WPA3PSK-TKIPAES Wireless MAC address filtering: support white list Spectrum Navigation (5G Priority) WiFi timing off function User isolation: isolation between wireless networks, internal isolation of AP Transmit power setting Wireless client limit QoS: WMM
Internet function	Connection method: Static address, obtained from the management server, obtained from the gateway DHCP server: either a built-in DHCP server or an external DHCP server Cloud platform server firewall function
device management	PPPOE function: support PPPOE dial-up function Backup configuration information Restoring configuration information reset Restart includes scheduled restart and immediate restart firmware upgrade Time management including system display time and time synchronization



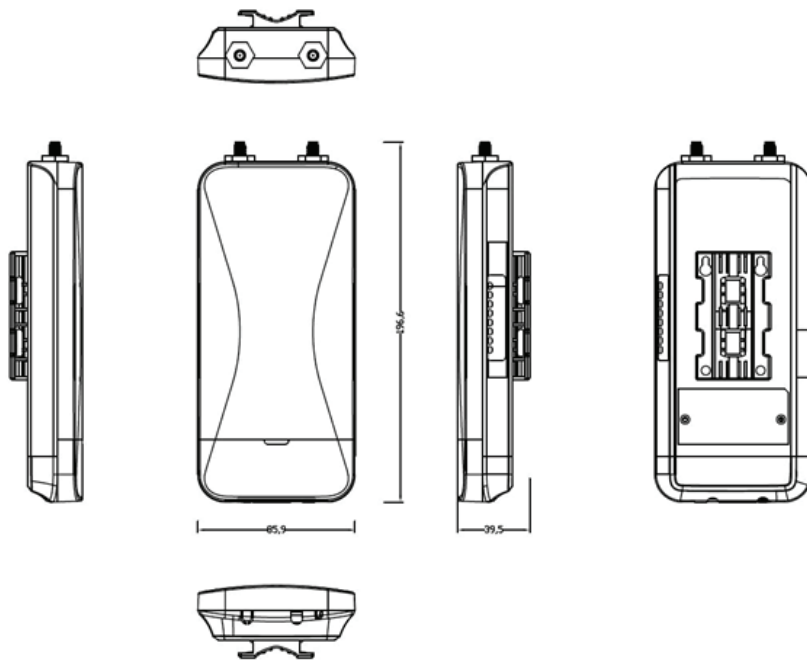
### Antenna Specification

Frequency Range	2.4GHz & 5.8GHz
Impedance	50 Ohms nominal
Gain	5dBi
Radiation	Omni
Polarization	Vertical
	S-Parameters (2.4G&5.8G)

### Packaging Information:

- 1\* WIS-EAP500-Outdoor
- 1\* Mounting Kit
- Quick Installation Guide
- Gift Box

### DIMENSIONS



### ORDERING INFORMATION

WIS-EAP500-OUTDOOR

11AC 1200Mbps Wi-Fi5 Dual Band Managed Outdoor Wireless AP



\*Product specifications and availability are subject to change without notice

